

Work Instruction

D40/D100 cleaning

Step

What do you have to do?

Photo

Always use the appropriate PPE (personal protective equipment)!

1

Close the silo hatch.



2

Disconnect the power supply to the mixing cabinet.

- Turn the main switch off.
- Remove the power cable from the mixing cabinet.



3

Remove the bearing cover of the screw by loosening the clamps and pulling it towards you.



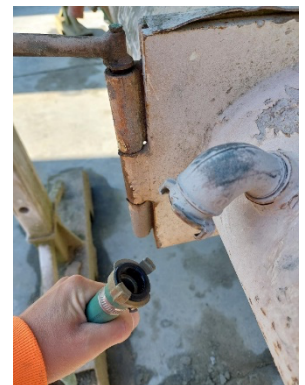
4

Remove the screw by pulling it out with a turning movement.



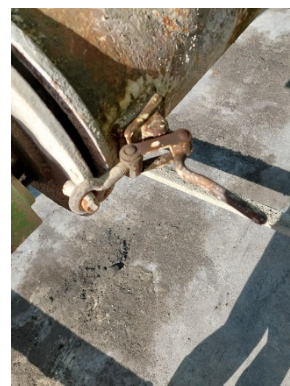
5

Disconnect the supply hose coming from the cabinet from the wet screw tube.



6

Open the wet screw tube by loosening the clamp.



7

Twist the wet screw tube to the left.



8

Rinse the wet screw tube thoroughly and remove any hardened residue.

Beware! Also check the water outlet hole – it must be clean and unobstructed.



9

Spray the screw and bearing cap clean.

Beware! The outlet of the bearing cover must be completely clean!



10

Clean the passage to the dry screw with a pointing trowel or a piece of rebar..



11

Push a piece of rebar through the dry screw to ensure both screws fit properly together.

12

Twist the wet screw tube back in place, and secure it using the clamp.



13

Reinstall the wet screw and the bearing cover.

Beware!

- Turn the screw slightly to lock it in place.
- If the wet screw does not fit correctly into the dry screw, clean both parts more thoroughly. Never hit the wet screw with a hammer!



14

Reconnect the water hose from the cabinet to the wet screw tube.



15

At the end of each work week, clean the dry chamber:

by releasing the motor clamp, then opening the motor housing and removing any dust and residue with a dusting brush.

