

# Work Instruction

## D10 cleaning

Step

What do you have to do?

Photo

Always use the appropriate PPE (personal protective equipment)!

1

Close the silo hatch.

2

Run the mixer empty until clean water flows out.

3

Disconnect the power supply to the D10 unit:

- Switch the main switch off!
- Unplug the power cable from the D10 unit.



4

Remove the wet screw tube from the mixer by turning it a quarter turn to the left and then pulling it towards you.



5

Pull out the wet screw.



6

Clean the screw passage with a pointing trowel until both screws fit properly together.

Never hit the end of the wet screw with a hammer!



7

Also check and clean the water holes thoroughly.



8

Fit the rinse cap and wipe the blue plastic cover with a dusting brush. Carefully remove the last residues with water.

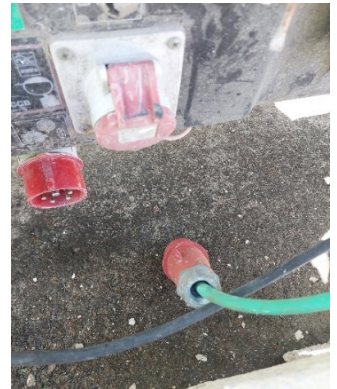
Do not spray excessive water on the rinse cap – water may leak.



# 9

Clean the rear section of the D10 once per week:

- Close the silo hatch.
- Unplug the motor cable from the D10 unit.
- Knock out the two retaining wedges with a hammer.
- Remove the motor by pulling it towards you.



# 10

Clean the dry chamber using the supplied scraper.

Remove any remaining residue with a dusting brush.

**Beware!** Never use water to clean the rear section.

